

Out of the Blue #4

- DESIGNED, PIECED, AND QUILTED BY: Caryl Bryer Fallert
- DATE: 2012
- SIZE: 30" wide X 30" high (76cm x 76cm)
- COLORS: Navy, fuchsia, green, chartreuse, yellow, rust
- MATERIALS: Fabric: 100% cotton fabric • Batting: 50% cotton / 50% bamboo • Thread: polyester
- TECHNIQUES: Machine pieced, & quilted
- IDENTIFYING MARKS: Signature & label
- OWNER: Private collection, Southlake, TX
- PHOTO: Caryl Bryer Fallert



Design Concept & Process:

Out of the blue is one of a series of curved compositions, in which I am playing with positive and negative spaces, and the juxtaposition of pattern and color. The fabrics come from several of my collections for Benartex. It was quilted with many different colors of polyester top stitching thread in various organic pattern, and parallel curving lines. This design was developed into a pattern, which is available from our Internet Store.

Exhibitions:

- 30 Quilts for 30 Years: Solo, traveling exhibition celebrating 30 years of making art quilts.
- International Quilt Market & Festival, 2013, Houston TX, October 25–November 3, 2013
- National Quilt Museum, Paducah KY, December 6, 2013 – March 11, 2014
- Bryerpatch Studio Gallery, Paducah KY March 15, 2014 – May 1, 2014
- Visions Art Museum, San Diego, CA, August 1, 2014 – September 21, 2014
- Wisconsin Quilt Museum, Cedarburg, WI, January 14– April 12, 2015
- LaConner Quilt Museum, LaConner WA – July 1–October 4, 2015
- Virginia Quilt Museum, Harrisonburg, VA – October 14, - December 19, 2015

Publications:

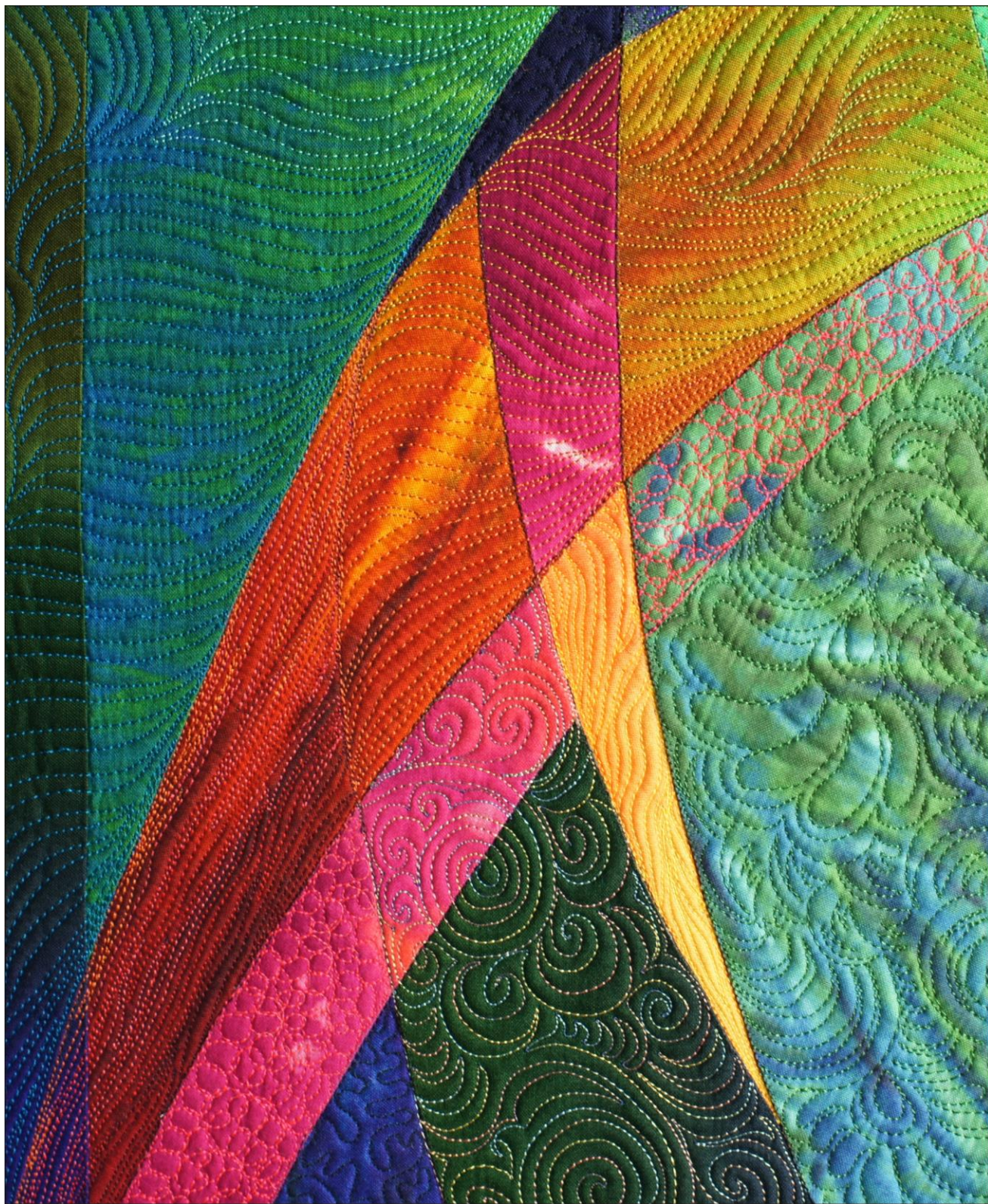
- none

CARYL BRYER FALLERT-GENTRY • QUILT ART RECORD

Bryerpatch Studio • 10 Baycliff Pl. • Port Townsend, WA 98368 • caryl@bryerpatch.com • www.bryerpatch.com



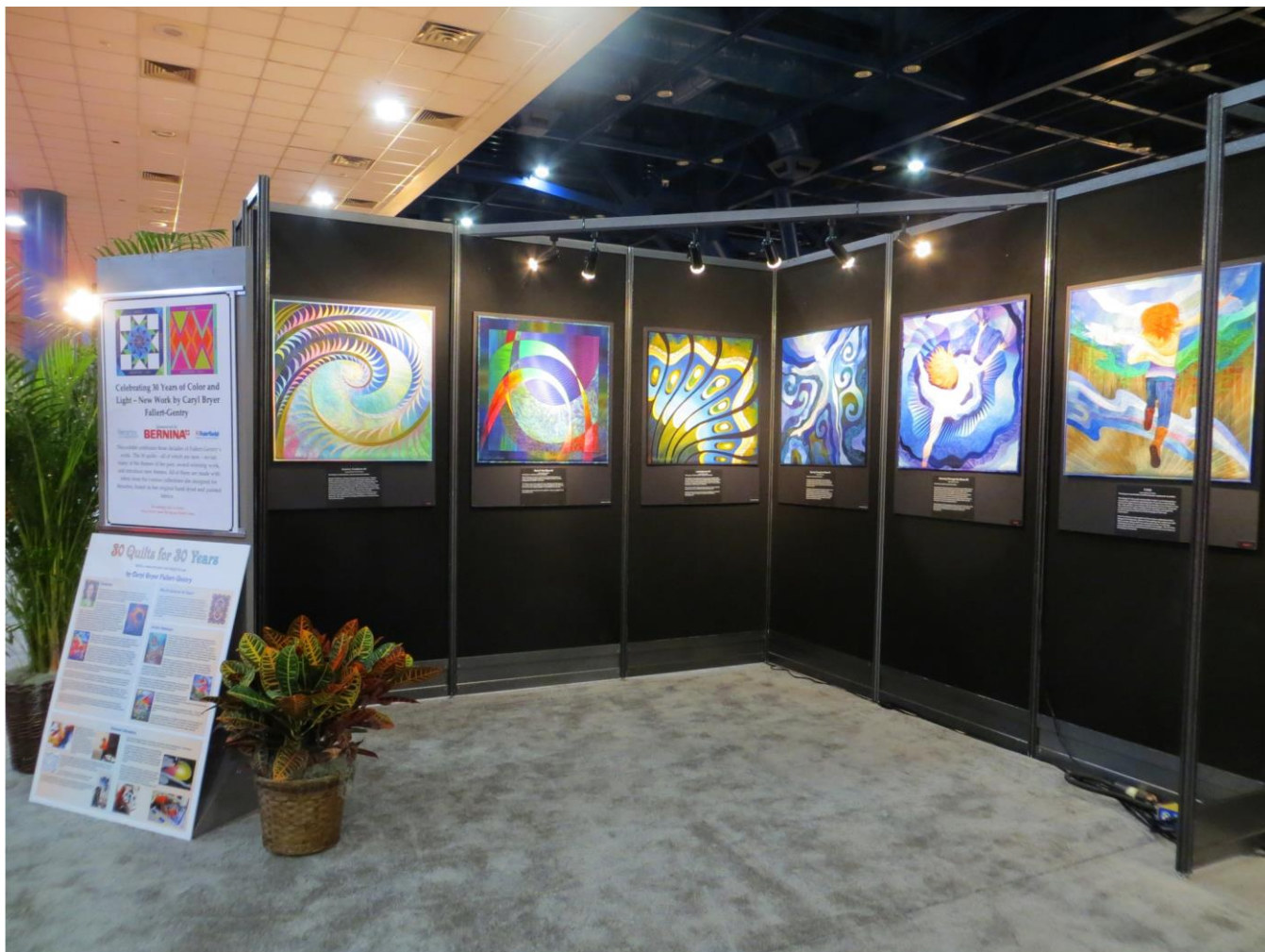
Out of the Blue #4 • 30" x 30" • Copyright © 2012 Caryl Bryer Fallert • Bryerpatch Studio • www.bryerpatch.com



Out of the Blue #4 (detail) • 30" x 30" • Copyright © 2012 Caryl Bryer Fallert • Bryerpatch Studio • www.bryerpatch.com

CARYL BRYER FALLERT-GENTRY • QUILT ART RECORD

Bryerpatch Studio • 10 Baycliff Pl. • Port Townsend, WA 98368 • caryl@bryerpatch.com • www.bryerpatch.com



Installation at International Quilt Market & Festival, 2013, Houston, TX