

Lepidopteran #3

- DESIGNED, PIECED, AND QUILTED BY: Caryl Bryer Fallert
- DATE: 2012
- SIZE: 30" x 30" (76 cm x 76 cm)
- COLORS: Blue, gold, yellow, green, black
- MATERIALS: Fabric: 100% cotton, Batting: 50% cotton / 50% bamboo
- TECHNIQUES: Machine pieced, and quilted
- IDENTIFYING MARKS: Signature & label
- OWNER: Private collection, Houston, TX
- PHOTO: Caryl Bryer Fallert



Design Concept & Process:

The design for this quilt evolved from a series of sketches that started with a leaf that fell from a Bradford pear tree a block from my studio. After drawing several version of the leaf, the design evolved, and I began to realize that it was similar in many ways to the patterns on the wings of a butterfly. This version of the drawing actually looked more like a butterfly wing than a leaf, so I called the quilt Lepidopteran #3. All of the fabrics in this quilt are from my Gradations and Splash collections, which I designed for Benartex.

Exhibitions:

- Bryerpatch Studio, Paducah KY October 2012
- American Quilters Society Show 2013, Paducah KY- **Honorable Mention**
- 30 Quilts for 30 Years: Solo, traveling exhibition celebrating 30 years of making art quilts.
 - International Quilt Market & Festival, 2013, Houston TX, October 25-November 3, 2013
 - National Quilt Museum, Paducah KY, December 6, 2013 to March 11, 2014
 - Visions Art Museum, San Diego, CA, August 1, 2014 – September 21, 2014
 - Wisconsin Quilt Museum, Cedarburg, WI, January 14- April 12, 2015
 - LaConner Quilt Museum, LaConner WA – July 1–October 4, 2015
 - Virginia Quilt Museum, Harrisonburg, VA – October 14, - December 19, 2015
- Butterflies and Their Beautiful Kin (Invitational) Texas Quilt Museum: April 3 - June 29 2014

Publications:

- Catalogue of Show Quilts: 2013 (Quilt Week Paducah), American Quilters Society, p.66
- Fiber Art Now, Summer 2013, p.12
- Boston.com: December 09, 2013 at 08:40 AM, <http://finance.boston.com/boston/news/read/25843747/>&
- Butterflies: 2014, Texas Quilt Museum/Quintessential Quilt Media, p.29
- Quilting Arts Magazine: June/July 2014, p. 70

Gradations • Style 2046

21 Pale Wheat

17 Pearl Neutral

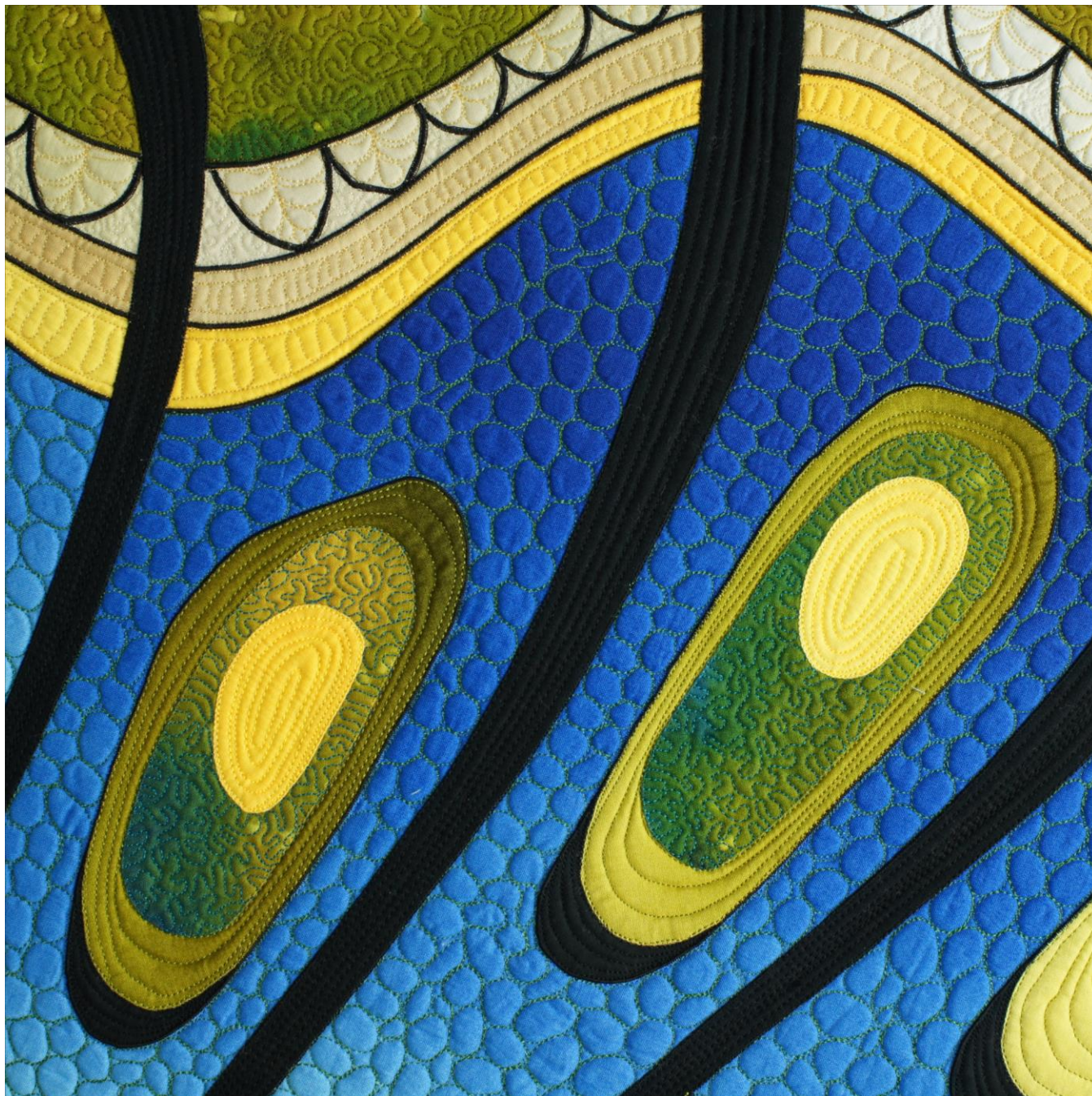
03 Corn Cream

43 Olive Ochre

75 Mahogany Teal

Splash • Style 2046

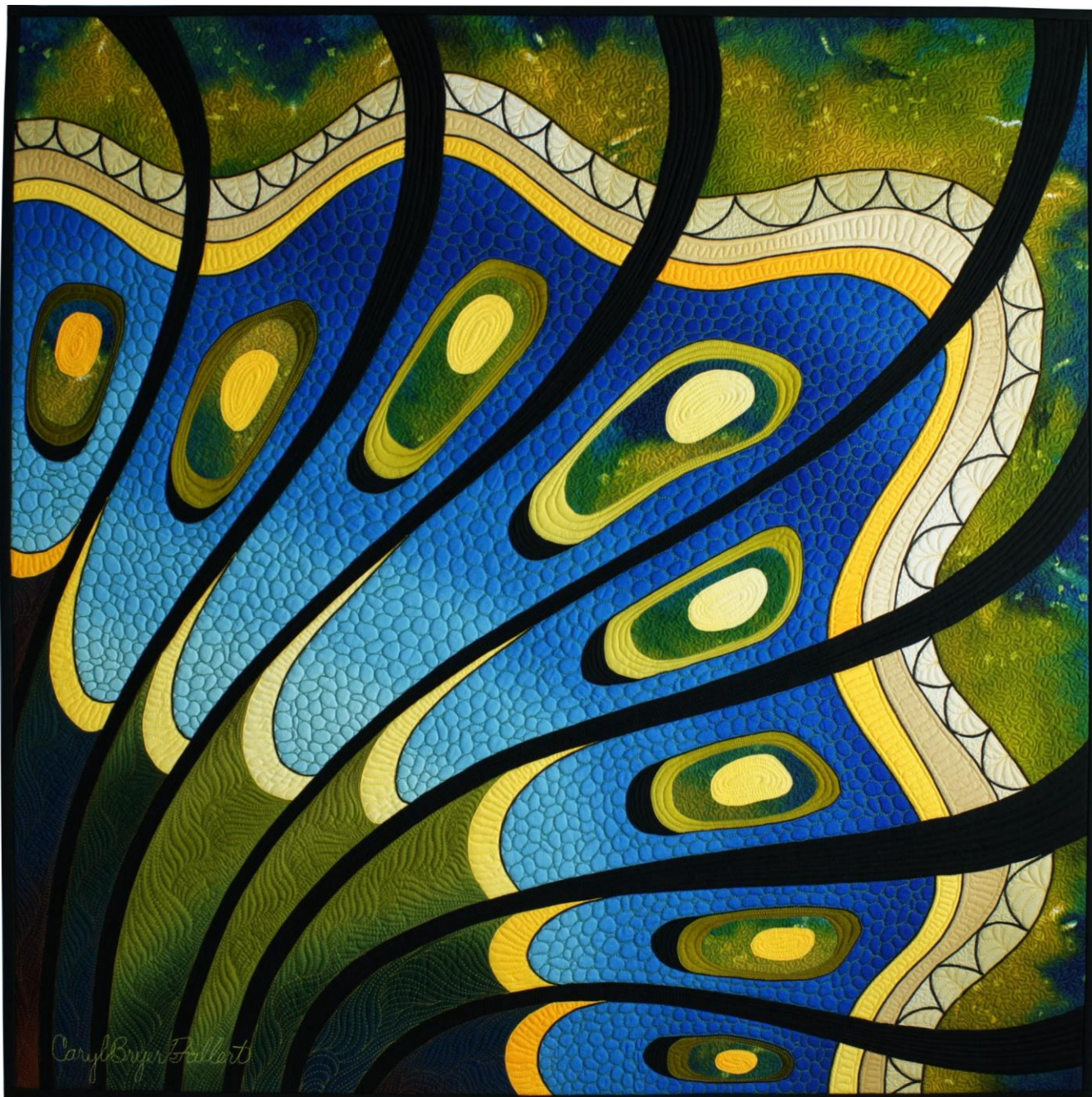
47 Forest Canopy



Lepidopteran #3 (detail) • 30" x 30" • Copyright © 2012 Caryl Bryer Fallert • Bryerpatch Studio • www.bryerpatch.com

CARYL BRYER FALLERT-GENTRY • QUILT ART RECORD

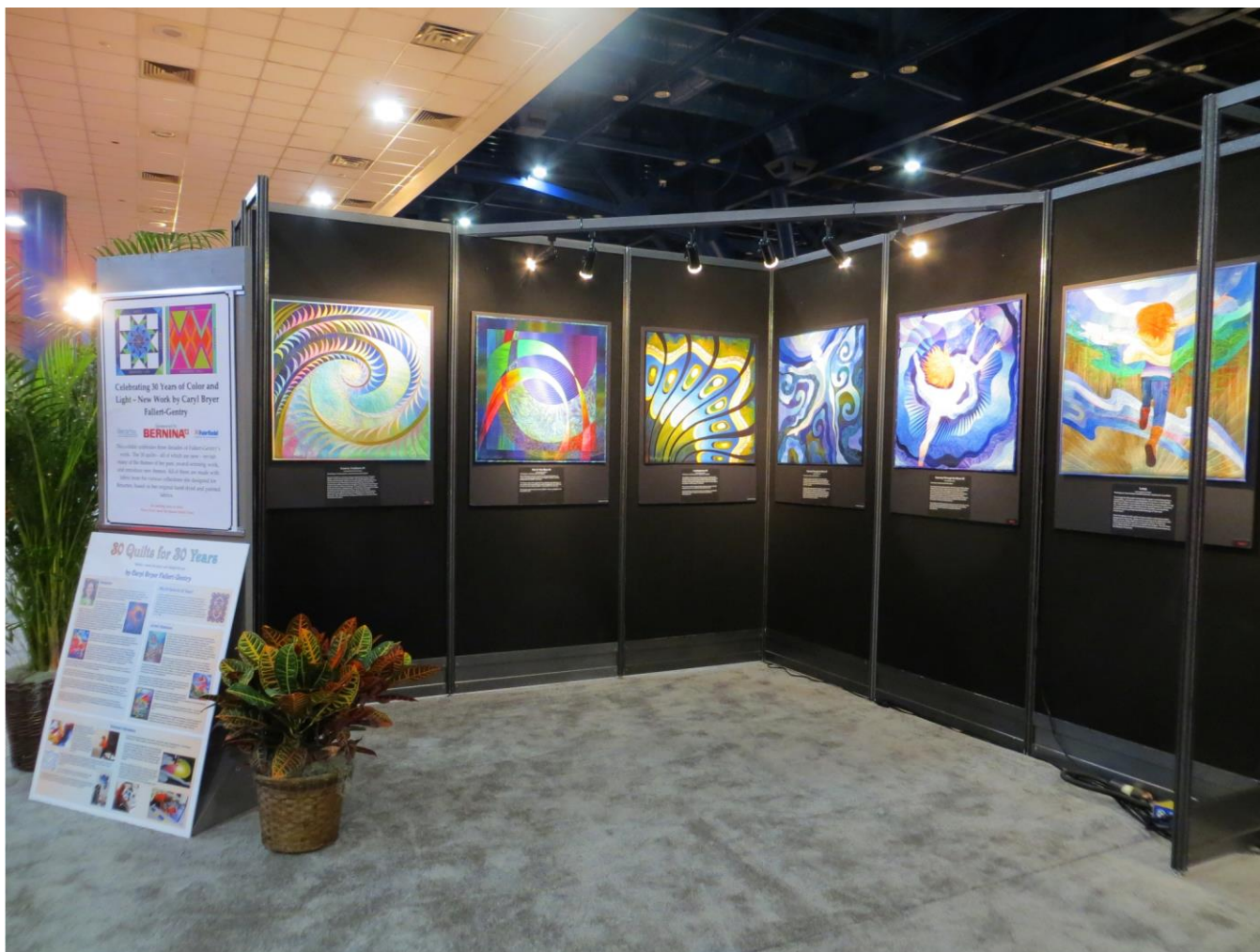
Bryerpatch Studio • 10 Baycliff Pl. • Port Townsend, WA 98368 • caryl@bryerpatch.com • www.bryerpatch.com



Lepidopteran #3 • 30" x 30" • Copyright © 2012 Caryl Bryer Fallert • Bryerpatch Studio • www.bryerpatch.com

CARYL BRYER FALLERT-GENTRY • QUILT ART RECORD

Bryerpatch Studio • 10 Baycliff Pl. • Port Townsend, WA 98368 • caryl@bryerpatch.com • www.bryerpatch.com



CARYL BRYER FALLERT-GENTRY • QUILT ART RECORD

Bryerpatch Studio • 10 Baycliff Pl. • Port Townsend, WA 98368 • caryl@bryerpatch.com • www.bryerpatch.com

Installation at International Quilt Market & Festival 2013, Houston, TX