

## E.T. Call Home #1

- DESIGN, PHOTOGRAPHY & QUILTING BY: Caryl Bryer Fallert-Gentry
- DATE 2025
- SIZE: 30" wide X 30" high
- MATERIALS: Fabric: 100% cotton • Batting: 50% cotton / 50% bamboo • Thread: polyester & acrylic
- TECHNIQUES: Dye painting, digital painting, digital printing, machine quilting
- IDENTIFYING MARKS: Signature & label
- PHOTO: Caryl Bryer Fallert-Gentry
- PRICE: \$2400.00



### *Design Concept & Process:*

This quilt is based on a photo of one of the fabrics I hand painted with dye in the 1990s. I placed the image in a square then placed additional rectangles on top and filled each with the same image, except that I changed the hues in each one. Finally, I added a circle filled with the same image in the original hues. The rectangles and circle appear to be transparent because the pattern in the fabric continues even through the colors change. The quilting in the rectangles is done in bobbin weight black thread in parallel lines. Within the circle I quilted free-motion spirals in red thread. The backing fabric is from my Glacier Park collection for Benartex. My husband Ron named it E.T. Call Home because it reminded him of a planet in outer space.

### *Exhibitions:*

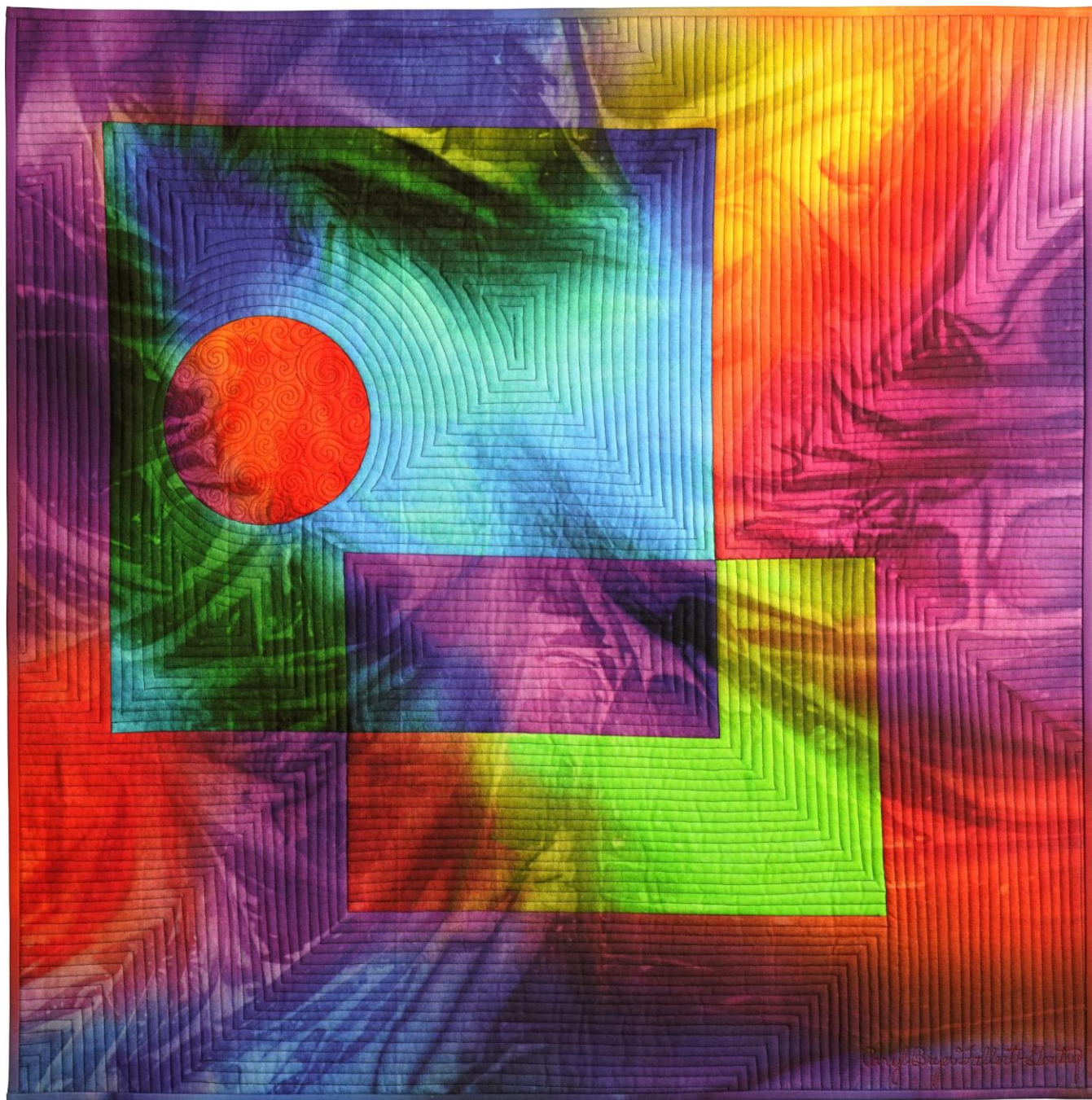
- None as of 1/12/2025

### *Publications:*

- None as of 1/12/2025

# CARYL BRYER FALLERT-GENTRY • QUILT ART RECORD

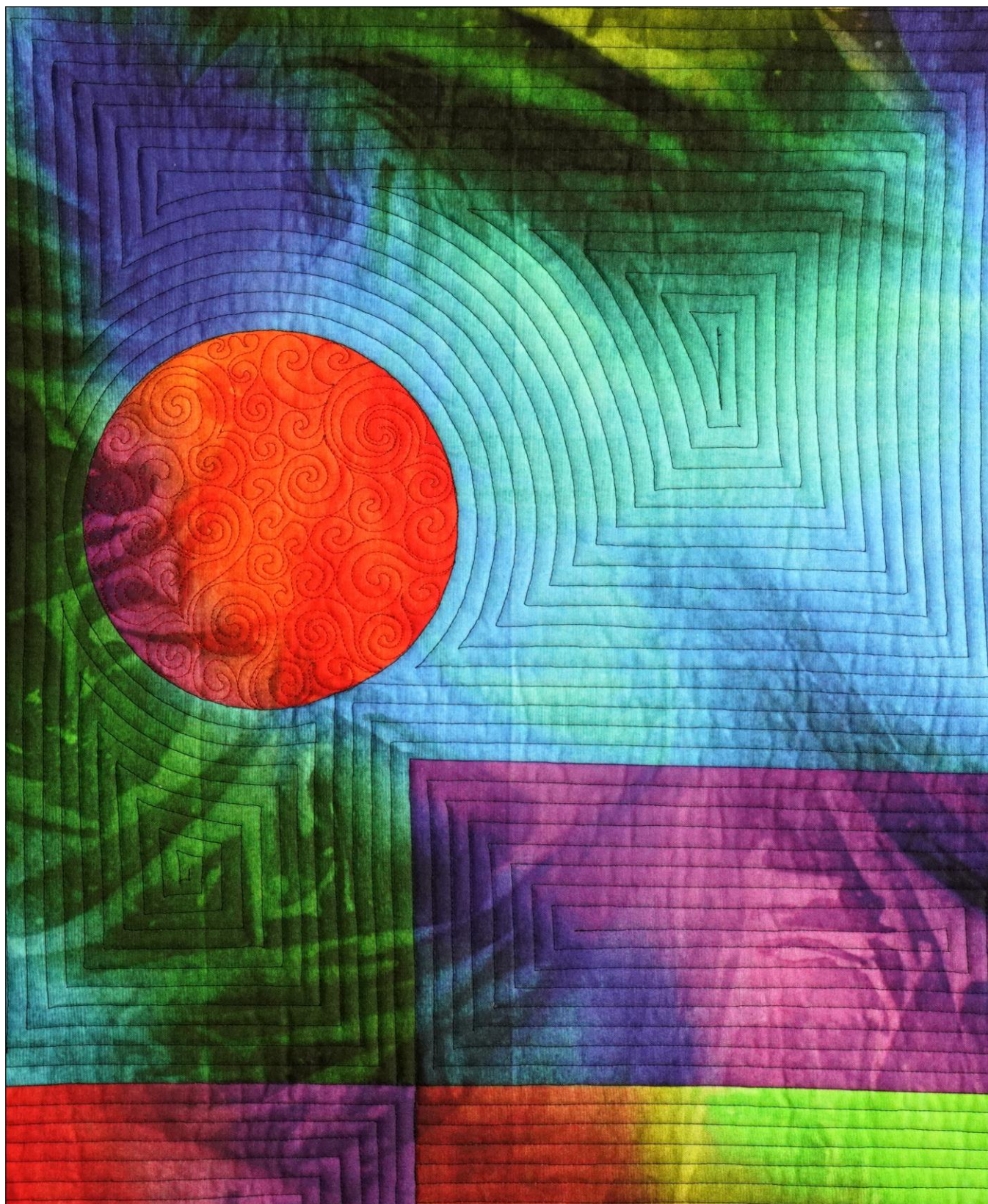
Bryerpatch Studio • 10 Baycliff Pl. • Port Townsend, WA 98368 • caryl@bryerpatch.com • www.bryerpatch.com



E.T. Call Home • 30" x 30" • Copyright © 2025 Caryl Bryer Fallert-Gentry • [www.bryerpatch.com](http://www.bryerpatch.com)

# CARYL BRYER FALLERT-GENTRY • QUILT ART RECORD

Bryerpatch Studio • 10 Baycliff Pl. • Port Townsend, WA 98368 • caryl@bryerpatch.com • www.bryerpatch.com



E.T. Call Home (detail) • 30" x 30" • Copyright © 2025 Caryl Bryer Fallert-Gentry • www.bryerpatch.com