

Lepidopteran #2: Buckeye & Chives

- DESIGNED, PIECED, APPLIQUED AND QUILTED BY: Caryl Bryer Fallert
- DATE: 2010
- SIZE: 48" high x 48" wide (122 cm x 122 cm)
- COLORS: Green, brown, white
- MATERIALS: fabric: 100% cotton / batting: 50% cotton / 50% bamboo
- TECHNIQUES: machine pieced, machine appliqued, machine quilted
- IDENTIFYING MARKS: Signature & label
- OWNER: Private Collection, Alpharetta, Georgia



Design Concept & Process:

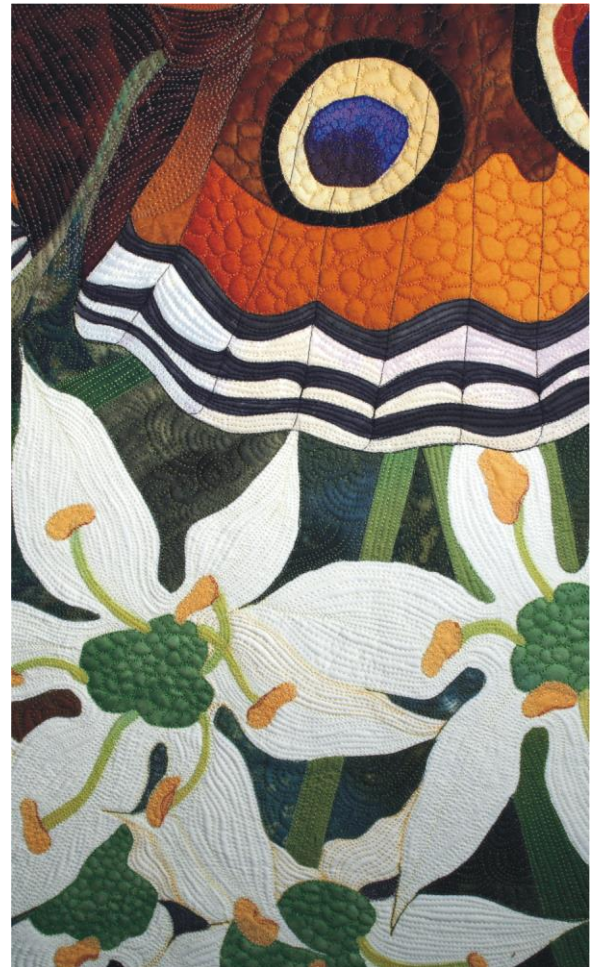
On a hot sunny day in early September of 2010 I went out to my herb garden and discovered the chives in full bloom with butterflies resting among the blossoms, obligingly holding their wings open. I grabbed my camera and took the photograph that inspired this quilt design. The design was drawn first with pencil on copier paper then enlarged to 48" x 48" on freezer paper. The freezer paper was cut into shapes which became the templates for cutting the fabric. All of the fabrics in this quilt are from my various collections for Benartex.

Exhibitions:

- Caryl Bryer Fallert-Gentry: A Retrospective, New England Quilt Museum, Lowell, MA, August 20 - October 31, 2015
- MasterPieces, National Quilt Museum, Paducah KY, June 13-Sept 9, 2014
- Quilters Hall of Fame: Celebration 2013 (Meredith Schroeder Induction Exhibit), Marion IN, July 19-Sept 30, 2013
- Quilts=Art=Quilts, (juried) Schweinfurth Memorial Art Center, Auburn NY October 2012-January, 2013
- Quilts a World of Beauty: International Quilt Association Juried Show, 2011, International Quilt Market and Festival, Houston, TX
- American Quilters Society Show, 2011, Paducah KY (**Honorable Mention**)
 - Bryerpatch Studio Gallery: Paducah KY. January 2011
- Caryl Bryer Fallert-Gentry: A Retrospective, New England Quilt Museum, Lowell, MA, August 20 - October 31, 2015

Publications:

- AQS Catalog of Show Quilts, 2011, American Quilters Society, p. 80
- Quilters Newsletter Magazine, August/September 2012 p.90 (**Photo Finish Feature**)
- Master Pieces, Quilts of Inspiration, AQS, 2013, Title page, cover, & p. 8
- Art Quilting Studio, Summer 2021, p. 52, **Feature**





Lepidopteran #2: Buckeye & Chives • 48" x 48" • Copyright © 2010 Caryl Bryer Fallert • Bryerpatch Studio • www.bryerpatch.com