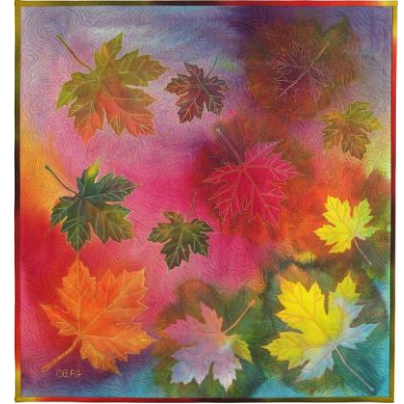


CARYL BRYER FALLERT-GENTRY • QUILT ART RECORD

Bryerpatch Studio • 10 Baycliff Place • Port Townsend, WA 98368 • caryl@bryerpatch.com • www.bryerpatch.com

Maple Leaf Rag

- DESIGN & QUILTING BY: Caryl Bryer Fallert-Gentry
- DATE 2026
- SIZE: 30" wide X 30" high
- MATERIALS: Fabric: 100% cotton • Batting: 50% cotton / 50% bamboo • Thread: acrylic & polyester
- TECHNIQUES: original digital design, digital painting, digital printing, machine quilting
- IDENTIFYING MARKS: Signature & label
- PHOTO: Caryl Bryer Fallert-Gentry
- PRICE: \$800



Design Concept & Process:

This quilt began as a fabric painting experiment in the 1990s. I used leaves from the trees in our front yard. Some of them were coated with acrylic fabric paint and pressed onto white fabric to leave a painted impression. Others were laid directly on the white fabric without paint. Then I used a brush to paint over their edges, creating the silhouette of each leaf. When the paint was dry, I painted the whole thing with many colors of fiber reactive dye. The paint created a resist so the impressions of the leaves remained. This sample lived in a box labeled "beginnings" for many years and in 2026, I finally decided to quilt and finish it. The backing and binding fabrics are from two of the collections I designed for Benartex.

Exhibitions:

- None as of 6/11/2026

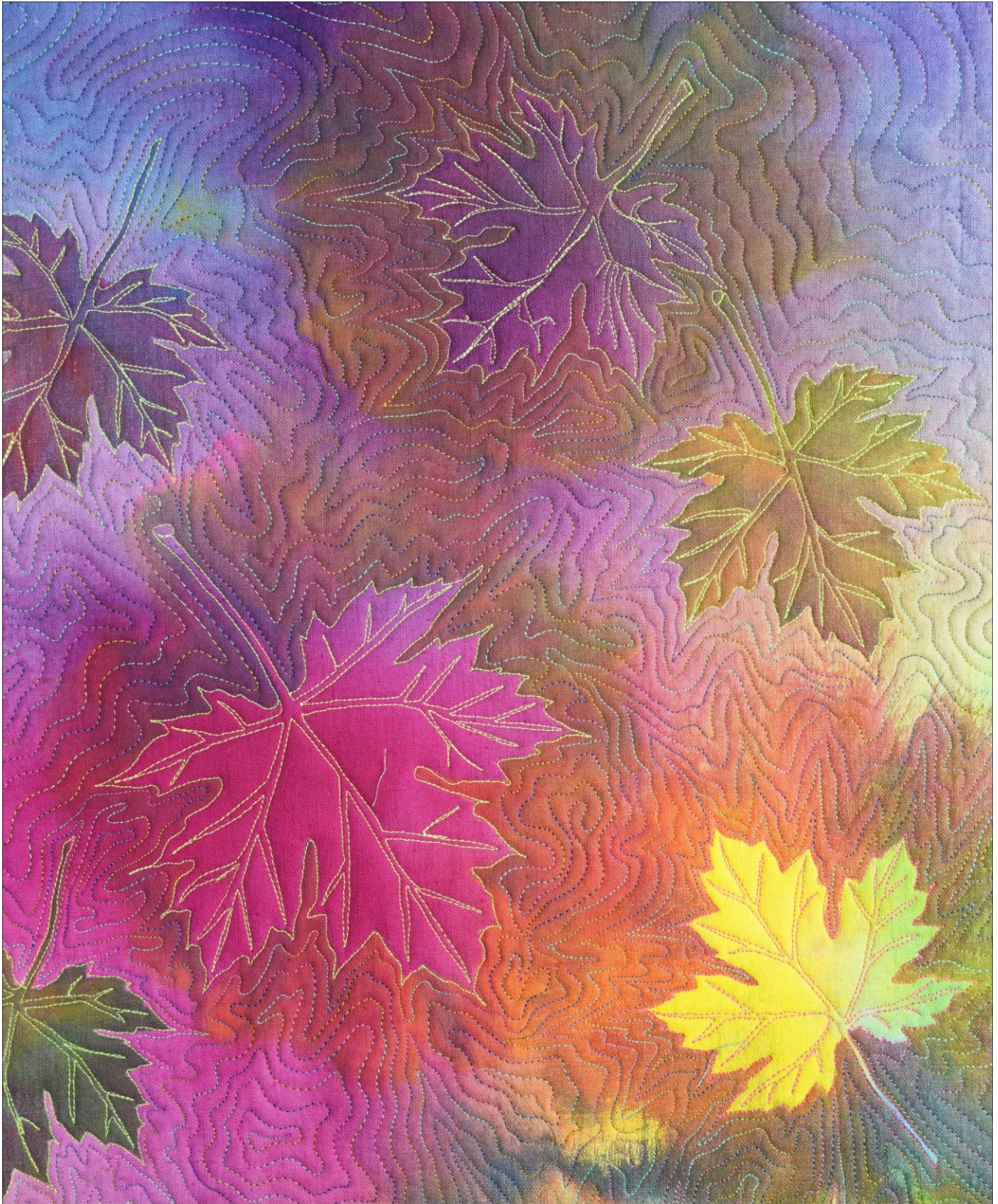
Publications:

- None as of 6/11/2026

CARYL BRYER FALLET-GENTRY • QUILT ART RECORD



Maple Leaf Rag • 21" x 22" • Copyright © 2026 Caryl Bryer Fallert-Gentry • www.bryerpatch.com



Maple Leaf Rag (detail) • 21" x 22" • Copyright © 2026 Caryl Bryer Fallert-Gentry • www.bryerpatch.com