

Reflection #34

- DESIGNED, PAINTED, PIECED, AND QUILTED BY: Caryl Bryer Fallert
- DATE: 1993
- SIZE: 68" wide X 49" high
- COLORS: Rainbow hues & black
- MATERIALS: 100% cotton fabric / 100% wool batting
- TECHNIQUES: Hand dyed, hand painted pieced, pleated, quilted.
- IDENTIFYING MARKS: Signature & label
- PHOTO: Caryl Bryer Fallert
- OWNER: This quilt was stolen from the gallery at the School of Culinary Arts at Kendall College, Evanston, IL in 2000. If you see it, please let us know.



Design Concept & Process:

This is one of a series of quilts in which three dimensional, constructed tucks are incorporated into a patterned background. Two different background fabrics were used. The first (fabric A) was painted with fiber reactive dyes in a single large sunburst type pattern, beginning with cobalt blue in the center and graduating through purple, fuchsia, and orange, to yellow. The second (fabric B) was painted with two sunburst forms, both beginning with yellow in the center and graduating to purple. The upper right sunburst graduates through all of the colors on the cool side of the color wheel (green, turquoise, blue) and the lower right sunburst graduates through all of the colors on the warm side of the color wheel (orange, red, fuchsia). Both fabrics were cut into 1/2" wide strips and sewn back together in alternating strips (A-B-A-B) with a tuck in each seam allowance.

Each of the 1/2" "tucks" was constructed from two different fabrics. The right sides of the tucks were made from fabrics dyed in a very intense, forty-six hue gradation of rainbow colors. The left sides of the tucks were made from black polished cotton. The use of light to dark and color to color gradations, and the twisting of the tucks from side to side, create the illusion of movement and light across the surface of the quilt. Because different colors are used on the right and left sides of the three dimensional tucks, the appearance of the quilt can be changed significantly by changing your point of view. I like to call the quilts in this series "viewer participation art."

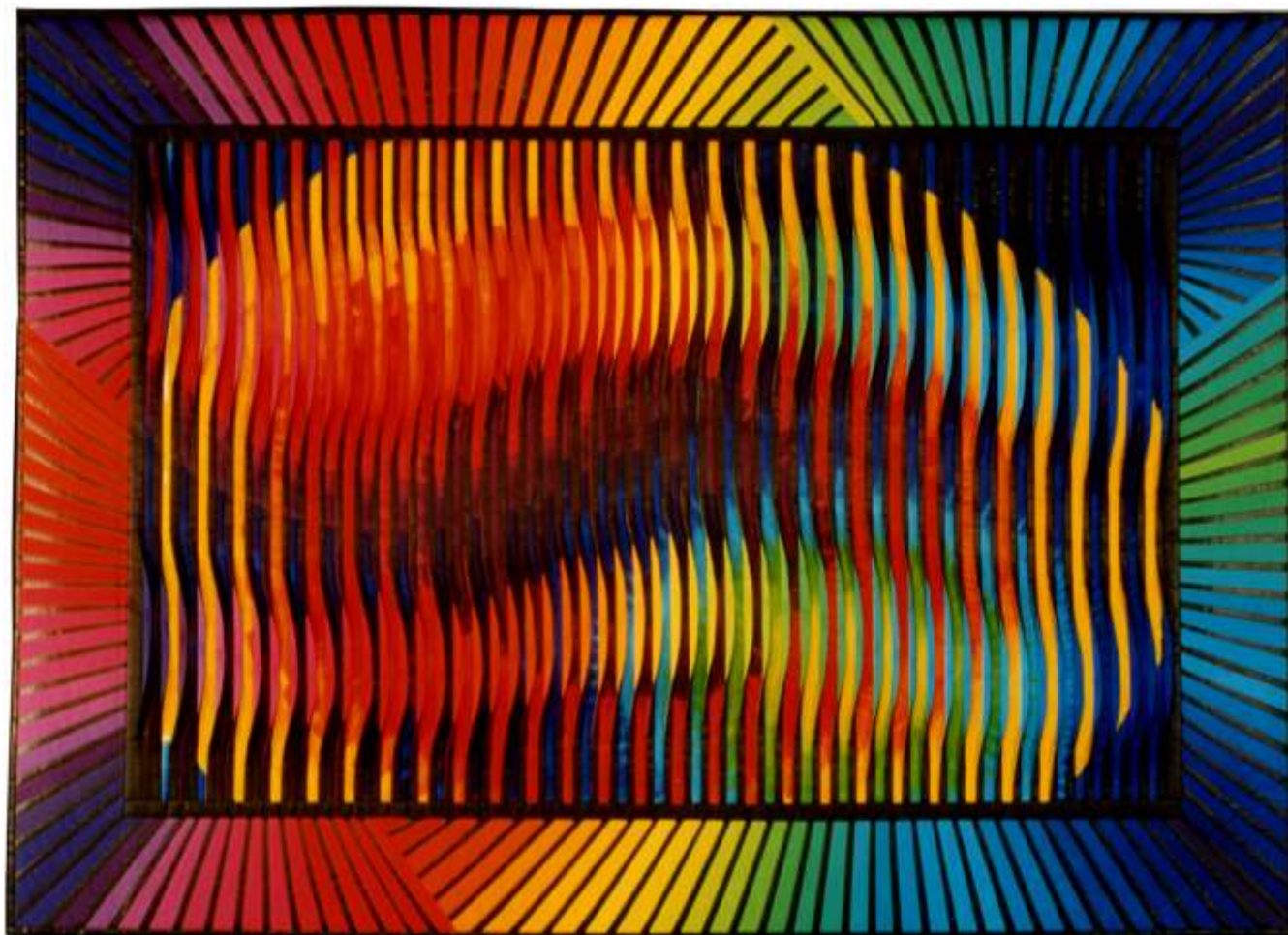
A radiating, string pieced border surrounds the three dimensional center panel. The border strips alternate between very narrow strips of black polished cotton and wider strips of the rainbow colors used in the tucks. The outer binding is black polished cotton.

Exhibitions:

- AMERICAN QUILTERS SOCIETY SHOW, 1994, Paducah, KY
- WESTERN HERITAGE CENTER: 22nd ANNUAL NATIONAL QUILT COMPETITION, 1991, (juried) Billings, MT (**FIRST PLACE, BEST USE OF COLOR, VIEWERS CHOICE**)
- LINDSEY GALLERY, 1995, Oak Park, IL
- SPECTRUM: THE TEXTILE ART OF CARYL BRYER FALLERT, 1996-1997, traveling, solo exhibition:
 - The Museum of the American Quilter's Society, Paducah, KY;
 - Illinois Art Gallery, State of Illinois Bldg., Chicago, IL;
 - Illinois State Museum, Springfield, IL
- CONTEMPORARY QUILTS, (invitational) 1997 Everson Arts Center, Syracuse, NY
- AUSTRALIAN QUILT FESTIVAL, (invitational) 1997, Melbourne, Australia
- A QUILTERS GATHERING, Eastcoast Quilters Alliance Show, 1997 (faculty invitational) Westford, MA
- Solo Exhibition, Kendall College School of Culinary Arts, Evanston, IL, 2000

Publications:

- CARYL BRYER FALLERT: A SPECTRUM OF QUILTS, 1983-1995 — 1996: AQS Books, pp. 76-77



Reflection #34 • 49" x 68" • Copyright © 1993 Caryl Bryer Fallert • Bryerpatch Studio • www.bryerpatch.com

CARYL BRYER FALLERT-GENTRY • QUILT ART RECORD

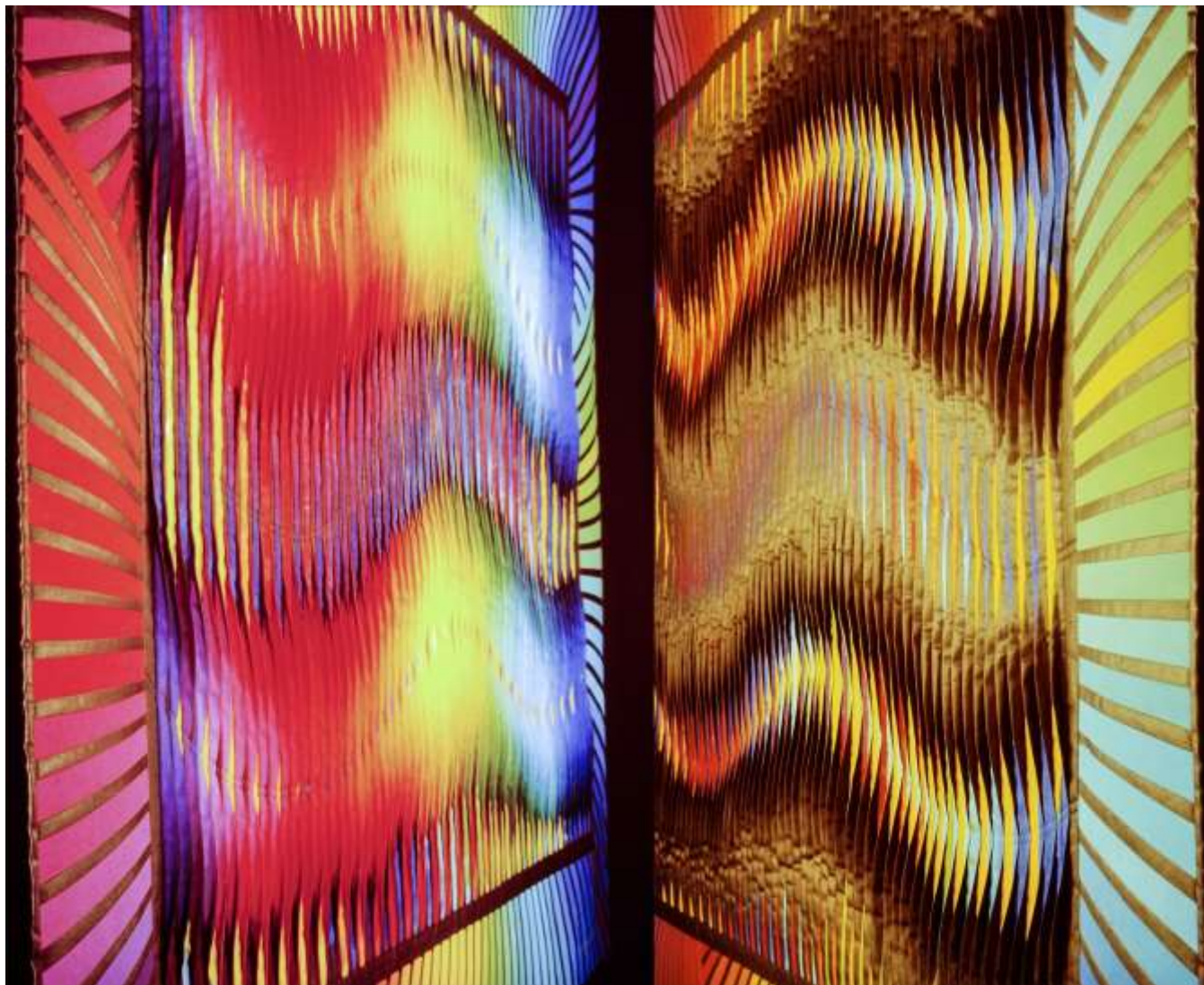
Bryerpatch Studio • 10 Baycliff Pl. • Port Townsend, WA 98368 • caryl@bryerpatch.com • www.bryerpatch.com



Reflection #34 (detail) • 49" x 68" • Copyright © 1993 Caryl Bryer Fallert • Bryerpatch Studio • www.bryerpatch.com

CARYL BRYER FALLERT-GENTRY • QUILT ART RECORD

Bryerpatch Studio • 10 Baycliff Pl. • Port Townsend, WA 98368 • caryl@bryerpatch.com • www.bryerpatch.com



Reflection #34 (Side Views) • 49" x 68" • Copyright © 1993 Caryl Bryer Fallert • Bryerpatch Studio • www.bryerpatch.com