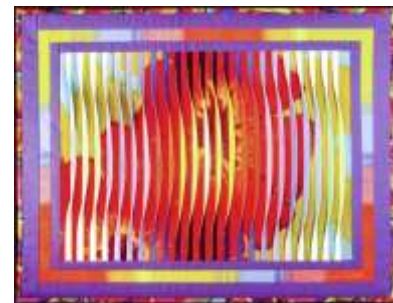


Reflection #39

- DESIGNED, PAINTED, PIECED, AND QUILTED BY: Caryl Bryer Fallert
- DATE: 1994
- SIZE: 32" wide X 24" high
- COLORS: red, lime green, purple
- MATERIALS: 100% cotton fabric / 100% wool batting
- TECHNIQUES: Hand dyed, hand painted, pieced, pleated, quilted.
- IDENTIFYING MARKS: Signature & label
- OWNER: Private collection
- PHOTO: Caryl Bryer Fallert



Design Concept & Process:

This is one of a series of quilts in which three dimensional, constructed tucks are incorporated into a patterned background. The background fabric was painted with fiber reactive dyes in an abstract design that suggests a close up look at the inside of a tulip.

Each of the 1/2" "tucks" was constructed from two different fabrics. The right sides of the tucks were made from fabrics dyed in a light to dark gradation of blue/violet. The left sides are rainbow colors. The use of graduated colors and values, and the twisting of the tucks from side to side, create the illusion of movement and light across the surface of the quilt. Because different colors are used on the right and left sides of the three dimensional tucks, the appearance of the quilt can be changed significantly by changing your point of view. I like to call the quilts in this series "viewer participation art."

The three dimensional center of the quilt is surrounded successive borders of solid purple and a painted rainbow fabric. The binding is a large tropical print fabric in rainbow hues.

Exhibitions:

- ILLINOIS
ARTISANS SHOP,
Lincoln Home
National Historic
Site, 1994,
Springfield, IL
- LINDSEY
GALLERY, 1997,
Oak Park, IL

Publications:

- None





Reflection #39 • 32" x 23" • Copyright © 1994 Caryl Bryer Fallert • www.bryerpatch.com