

Urban Maze

- DESIGNED AND PIECED BY: Caryl Bryer Fallert
- QUILTED BY: Jeanne Redal, St. Louis, MO
- DATE: 1985
- SIZE: 95" wide x 102" high
- COLORS: Multi-colors with black sashing
- MATERIALS: 100% cotton fabric / polyester batting
- TECHNIQUES: Machine pieced, hand quilted
- IDENTIFYING MARKS: label
- OWNER: Caryl Bryer Fallert
- PHOTO: Caryl Bryer Fallert
- PRICE: nfs



Design Concept & Process:

This quilt was made from strip-pieced solid and print fabrics, left over from my landscape quilt "Through the Gazebo Window". My intention was to create the illusion of changes in light, using hundreds of different fabrics. The arrangement of blocks is based, loosely on the traditional "Rail Fence" pattern. The black sashing was made in graduated sizes, and broken up with inserts of color, which give the quilt the look of a maze. The finished quilt reminded me of an aerial view of a city, therefore the title, "Urban Maze".

Exhibitions:

- QUILTESSSENCE, Worcester Crafts Center, (invitational) 1985 Worcester, MA
- THE MONROE GALLERY, 1986 (solo exhibition) Chicago, IL
- TEXTILE ARTS CENTER: QUILT INVITATIONAL (three person show) 1986, Chicago, IL
- CARLINVILLE QUILT CONFERENCE, 1987 (invitational) Carlinville, IL
- A HOLIDAY GARDEN OF QUILTS, Illinois Quilters Inc. 1986, Chicago Botanic Garden, Glencoe, IL
- A HOLIDAY GATHERING, Eastcoast Quilters Alliance, 1989 Westford, MA (**THIRD PLACE**)
- CONTEMPORARY QUILTS, (invitational) 1997 Everson Arts Center, Syracuse, NY
- SPECTRUM: THE TEXTILE ART OF CARYL BRYER FALLERT, Solo Exhibition, 1997-1998 New England Quilt Museum, Lowell, MA
- Caryl Bryer Fallert-Gentry: 40 Years of Color, Light, & Motion
 - University Museum, University of Mississippi, Oxford, MS, January 26 - April 16, 2016
 - Cedarhurst Center for the Arts, Mt. Vernon, IL, July 31-October 9, 2016

Publications:

- CARYL BRYER FALLERT: A SPECTRUM OF QUILTS, 1996, AQS Books, pp. 24-25
- TRADITIONAL QUILTER, 1997: Golden 50th Issue, p. 38

CARYL BRYER FALLERT-GENTRY • QUILT ART RECORD

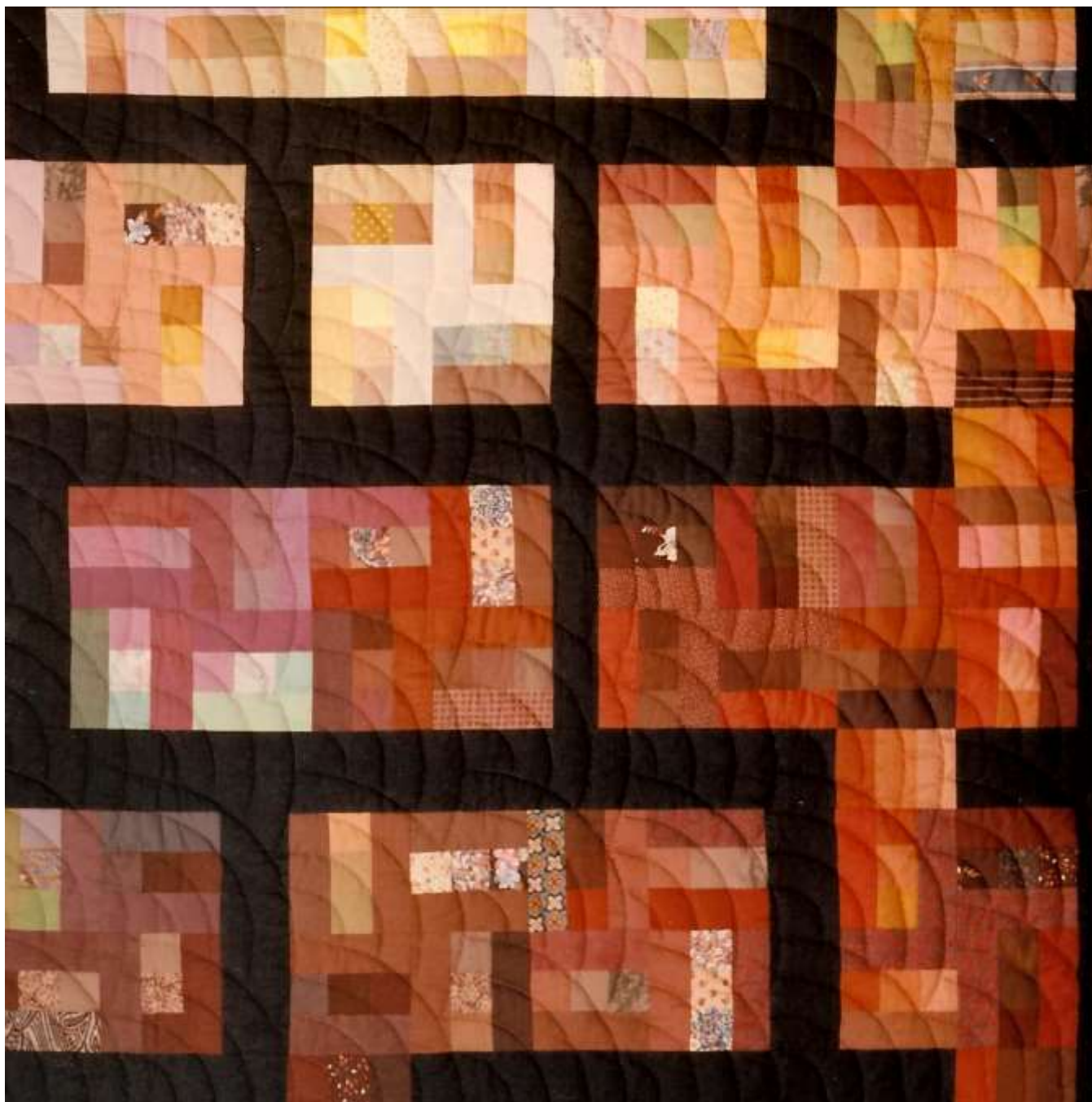
Bryerpatch Studio • 10 Baycliff Pl. • Port Townsend, WA 98368 • caryl@bryerpatch.com • www.bryerpatch.com



Urban Maze • 95" x 102" • Copyright ©1985 Caryl Bryer Fallert • Bryerpatch Studio • www.bryerpatch.com

CARYL BRYER FALLERT-GENTRY • QUILT ART RECORD

Bryerpatch Studio • 10 Baycliff Pl. • Port Townsend, WA 98368 • caryl@bryerpatch.com • www.bryerpatch.com



Urban Maze (detail) • 95" x 102" • Copyright ©1985 Caryl Bryer Fallert • Bryerpatch Studio • www.bryerpatch.com